

Maxxcare®

Heel Pro Evolution

Heel wounds are the second most common pressure injury worldwide!

The Maxxcare Heel Pro Evolution heel protector has many features that make it a great solution for the nursing home care environment above its competitors.

- Offloads the heel to minimize risk of pressure injury or to assist in healing of an existing heel wound
- Can be worn in bed or while in a wheelchair
- Vicair® air-filled Smart Tubes help immerse bony prominences and reduce shear and friction
- Non-skid bottom allows for transfer wearing the boot
- Easy to put on/take off

Machine washable for infection control and multi-patient use



Advanced heel offloading device

permobil

Maxxcare®

Heel Pro Evolution



Clinical case study

A 57-year-old female admitted to a rehabilitation ward, following the amputation of her left leg after developing complications from an infected diabetic foot ulcer 10 months earlier.

She was wheelchair dependent and used her right leg to transfer from bed to chair with assistance.

She was assessed as being at very high risk of developing pressure damage.

For 5 months, her category 2 pressure injury was dressed daily, but she had difficulty in finding an appropriate pressure-relieving device to offload the heel to help her move from her bed to a chair.

On examination, the wound was clean and protected with an appropriate dressing.

The wound measured 3.4 cm² in surface area (Figure 4).



Figure 4

After application of the Maxxcare Heel Protector, the patient reported that her foot felt more comfortable and the foot plate of her wheelchair no longer felt uncomfortable.

By day 7, the wound had decreased in size by 1.9 cm² and the wound continued to improve.

On day 14, the wound had decreased to less than 0.5 cm² in surface area (Figure 5).

Due to her positive experience, she continued to wear the boot post-evaluation.

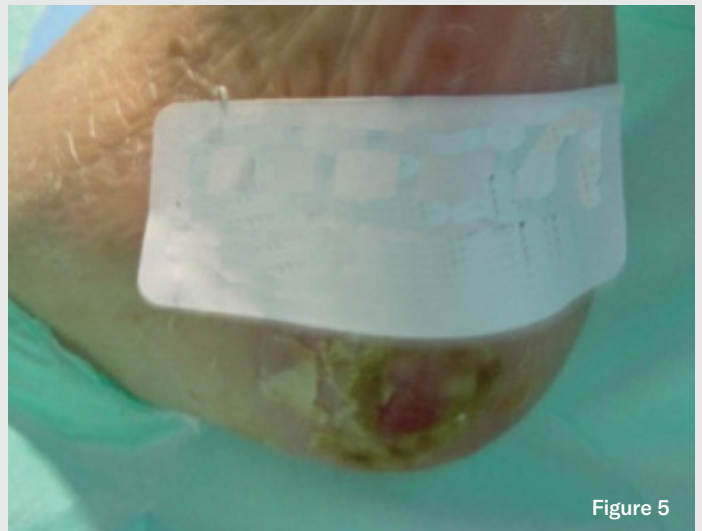


Figure 5

Using the appropriate Permobil seating and positioning product may reduce the risk factors that contribute to pressure injury development. However, prior to using a Permobil seating and positioning product, it is important that each resident be assessed by a health care professional.